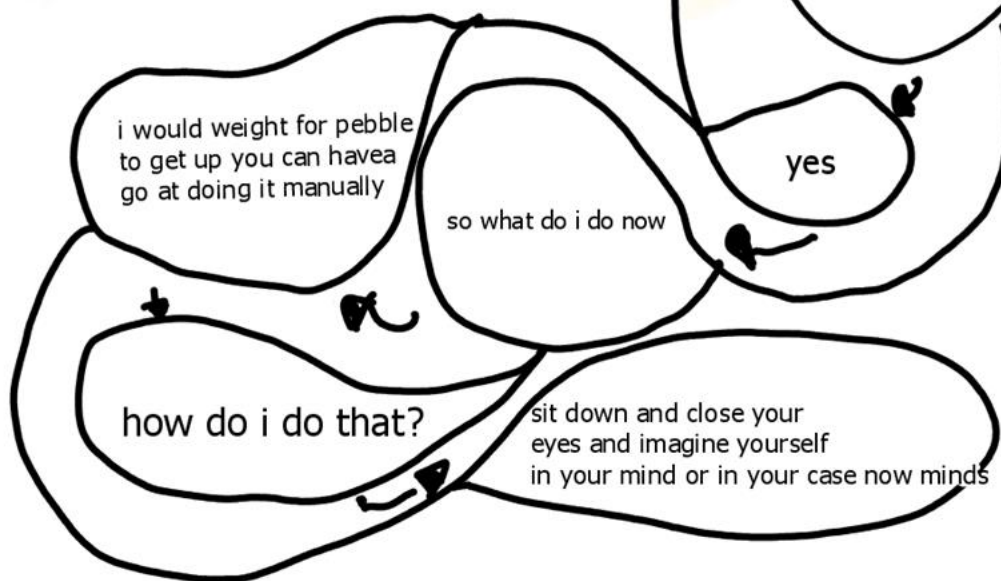


long walk home







so is this my mind?

does it look like your mind?

no i would think it would
have more of the stuff
i like

Correct its peeble's mind

so where is peeble?

by that tree





SCREAM AT THE TOP
OF YOUR LUNGS WHEN
YOU GET UP **NOT** IN PERSON
Yell MENTALLY DONT SCARE
JOSH'S NEIGHBOURS



see this door

yes

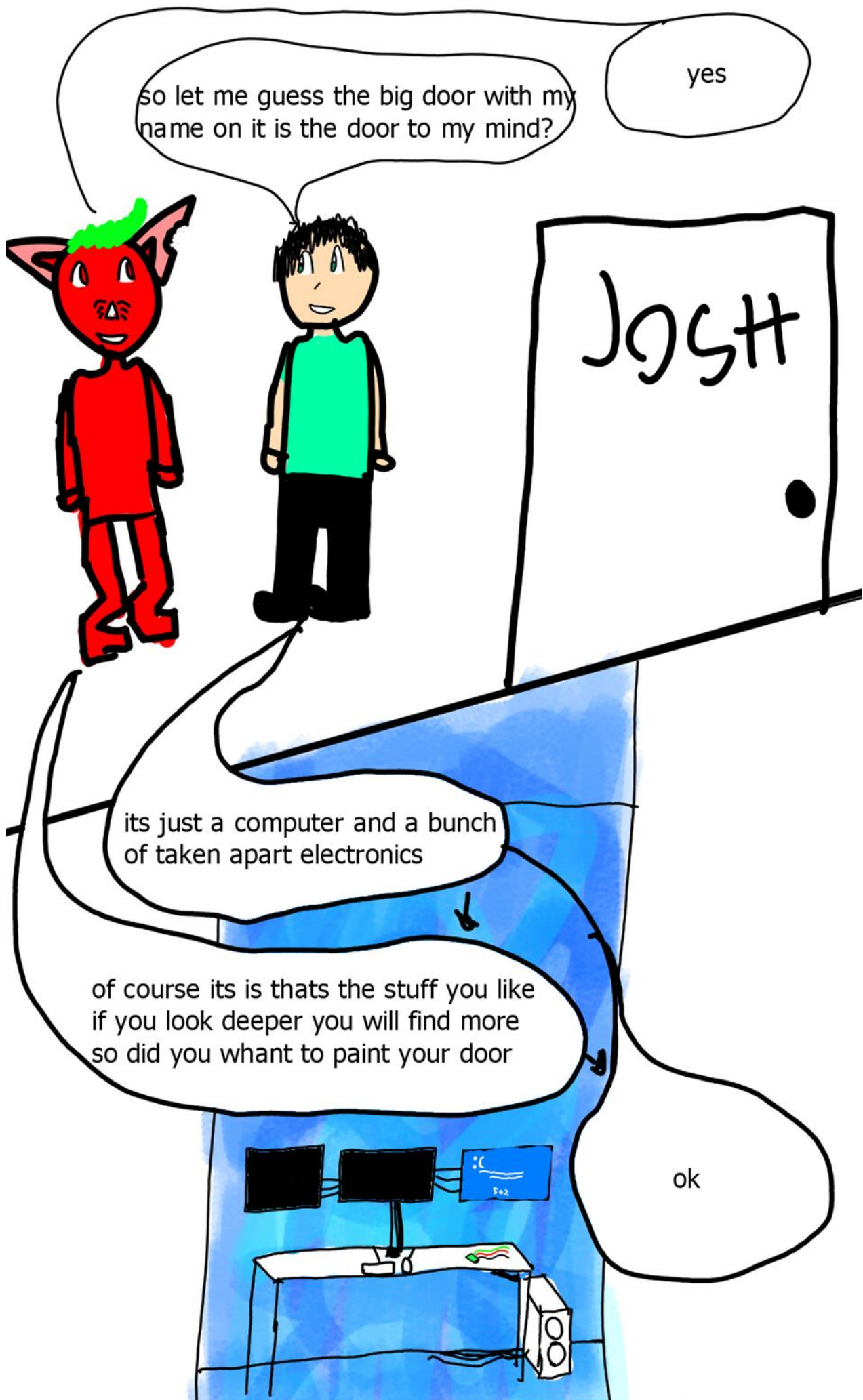
this door leads to the
link and to your mind

to me it looks like a blank room
with a mattress and a small tv with a xbox
and how are you powering that anyway?

↓
dont worry how i power it i will show
you your mind and you can paint your door later

wellcome to the link





so then josh started to think up of a design and paint it and showed neecra but then...



NEECRA HOW DO YOU
THINK THIS LOOKS!!!!

i think it looks fine but it
not the most creative
like it

IM UP GUY'S!!!!!!

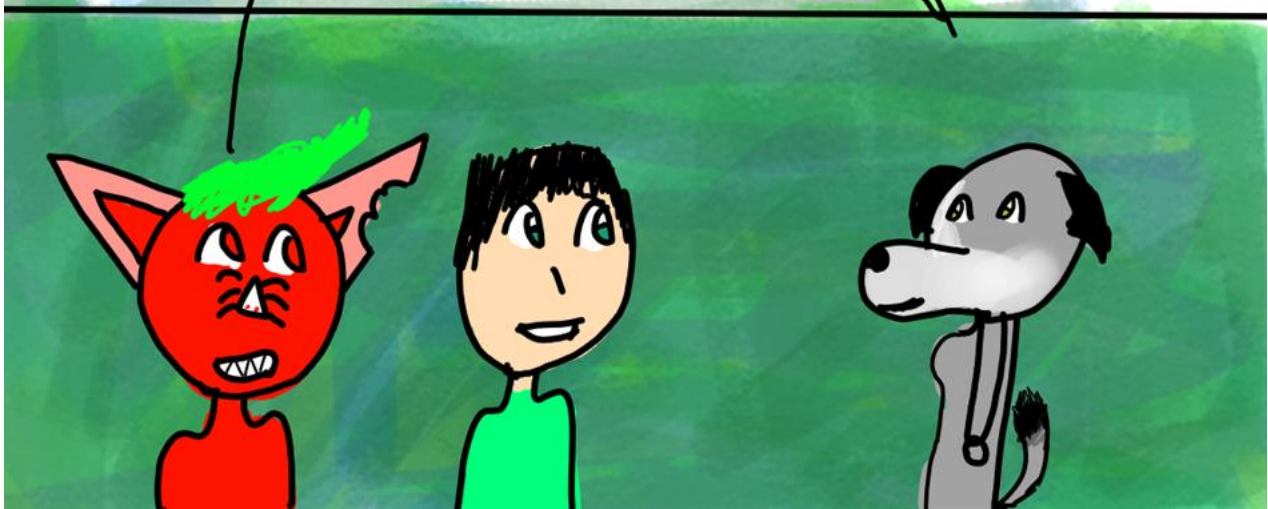




we are coming pebble

well i think we should get
pebble home as josh is safe

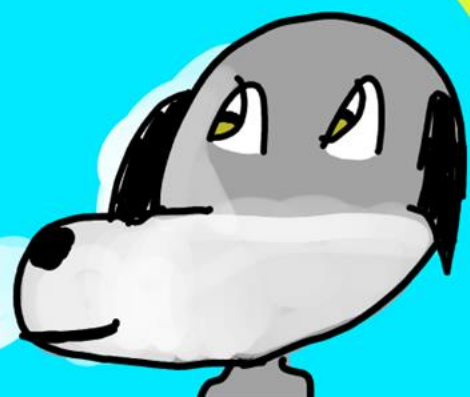
Hi guys what do we do now





to leave here you just wake up but josh will come with you so josh imagine walking through pebble dont worry ill be a voice in your head so i will all ways be with you and josh i have added a clock to your clock app on your phone but in short if it is day in HI16 it is night in 44FY so you can see the time in HI16 ok now go

soooo how do i leave here





[soooooooooo
are youuuuu
whaaaaattt]

[im treenam
and i can ask
the same thing of you]

[no are you like
part wolf
part]

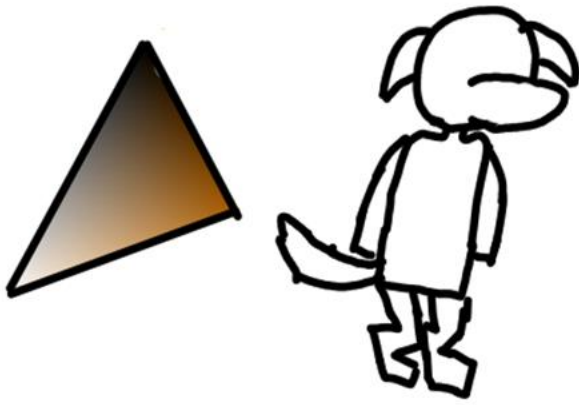
you need to think for a sec what
you are saying it is like asking
are you part treenam part chimp



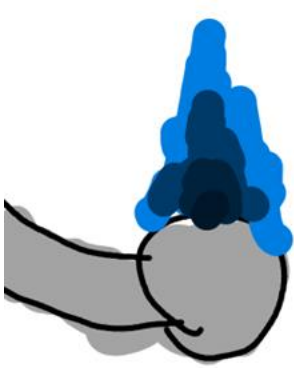
[soo neecra pebble what can
you tell me about this world]

well i will give you a quick run
down of this world i have some
more pages

MORE LAW !!!



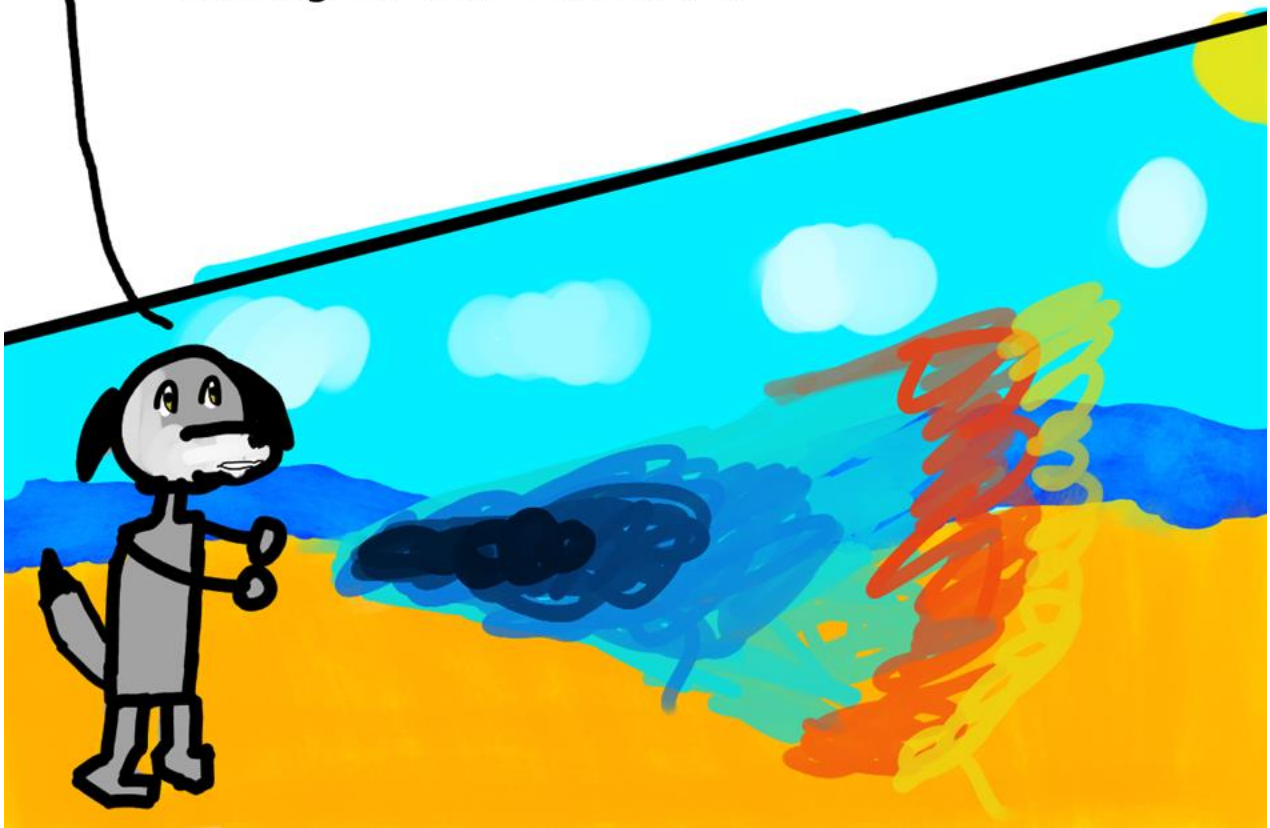
so pebble is a treenam it this worlds integent
race peeble is gray (mostly) but treenam
come in a lot of colours well just 3 black white
brown or any shade in between and if you could
not tell she is a female.
teenam live about as long as you so
80 to 100 years



so one thing treenam are cappable of is magic now magic is very powerfull but not all treenam can use magic it is a skill like you need to train your skill and learn hay peeble can you do any magic?

[i can only do a basic fire spell and i cant control it well josh stand behind me]

ok so you see in pebbles case she has a lot of power but cant control it so it is like being strong but not haveing the skill to use it well





so in terms of technology they are far behind your world as in
they do not have electricity
well they do they just don't use it and they don't wear
full clothes like you do they wear
a loincloth and speaking of that pebble why are
you not wearing one

we were going to go swimming
and i did not want to lose it we
left at night and we were going to
come back at night so i did not
think much of it







[PEBBLE YOUR OK!!]

[yes i am]

[you did a really good job at healing her just a scar and you must of been thear as soon as she hit the ground and still i did not think that would work]

[im josh not treenam]

[ok i got you two up who is the hairless treenam?]

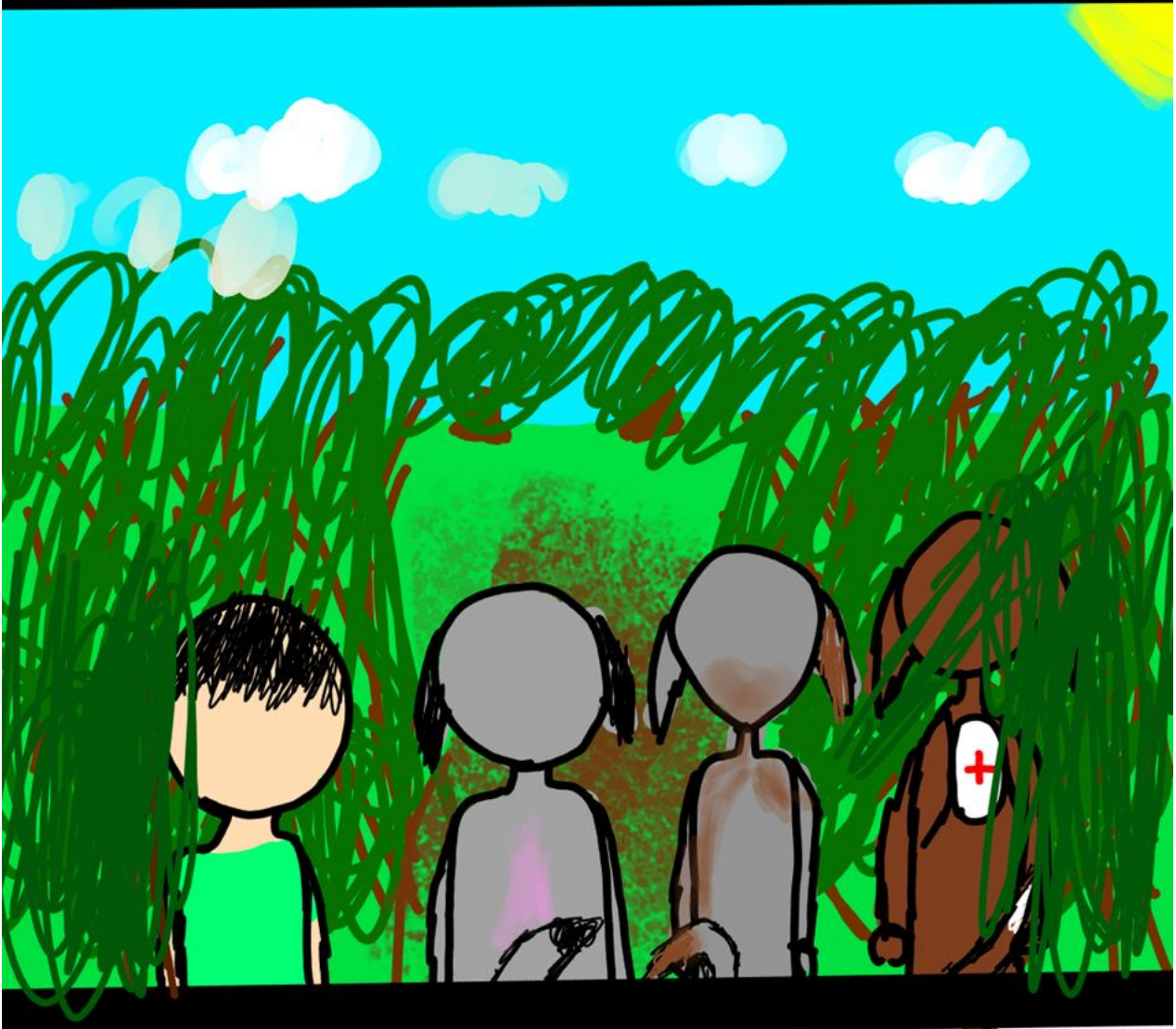
[how did you do it?]

[wellll i did not heal her im just a byproduct of what did me and peeble will explane its weird though trust me]

[well it is a long walk and a stoy on the way dose not sound like a bad idea]



One recap later



[and that is when i herd umm the
gray/brown one call out for pebble
ok now can you's tell me about
your self's]

[i am granite one
of peebles best
friends]

[i am hawthorn i am a healer]

[you know how i said i live in a
diffrent world well i have to
wake up now and show pebbles
my world]

[ok]

[pebble
you ready?]

[you two get to sleep
we will light up the fire]

[yes]



END OF CHAPTER 2 PART 2